

Series N filters and coalescing filters

New version

Ports: G1/8, G1/4



» Available with:
transparent PA12 bowl or
nickel-plated brass bowl
for the small version (N1)

Series N filters are available with G1/8
and G1/4 gas ports.
The models are available with 3 different
filtering elements: 25, 5 and 0.01µm.

The version with semi-automatic manual
drain is equipped with a transparent
bowl that makes the monitoring of the
condensate level very easy.

The version with metal bowl is
particularly suitable for applications
subject to impacts or in the presence of
aggressive agents that could damage
the PA12 bowl.

GENERAL DATA

Construction	HDPE and coalescing filtering element
Materials	brass, transparent PA12 or nickel-plated brass, NBR
Ports	G1/8 - G1/4
Max. condensate capacity	11 cm ³ (bowl size = 1) 28 cm ³ (bowl size = 2)
Weight	0.220 kg
Mounting	vertical, inline
Operating temperature	-5°C ÷ 50°C at 10 bar (with the dew point of the fluid lower than 2°C at the min. working temperature)
Quality of delivered air according to ISO 8573-1 2010	Class 7.8.4 with 25 µm filtering element Class 6.8.4 with 5 µm filtering element Class 1.8.1 with 0.01 µm filtering element
Draining of condensate	semi-automatic manual
Operating pressure	0.3 ÷ 16 bar (with depressurisation max 10 bar)
Nominal flow	see diagrams

CODING EXAMPLE

N	2	04	-	F	0	0	-
N	SERIES						
2	SIZE: 1 = small bowl (11 cm³) 2 = normal bowl (28 cm³)						
04	PORTS: 08 = G1/8 04 = G1/4						
F	F = FILTER						
0	FILTERING ELEMENT: 0 = 25µm (standard) 1 = 5µm B = 0.01µm						
0	TYPE OF CONDENSATE DRAIN: 0 = semi-automatic manual drain 4 = depressurisation (normal cup only) 5 = protected depressurisation (normal cup only) 8 = no drain, direct G1/8 exhaust						
	BOWL MATERIAL: = transparent PA12 (standard) TM = nickel-plated brass (only in the small size with semi-automatic manual drain or without drain)						

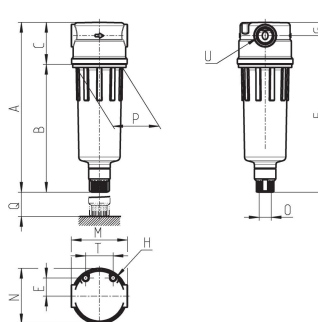
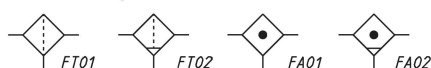
3

TREATMENT

Filters Series N



FT01 = filter without drain with threaded port
 FT02 = filter with semiautomatic manual drain
 FA01 = coalescing filter without drain with threaded port
 FA02 = coalescing filter with semi-automatic manual drain



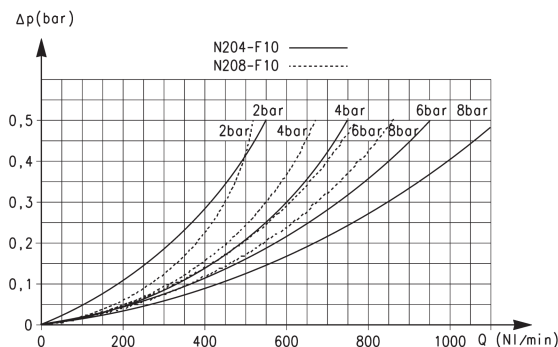
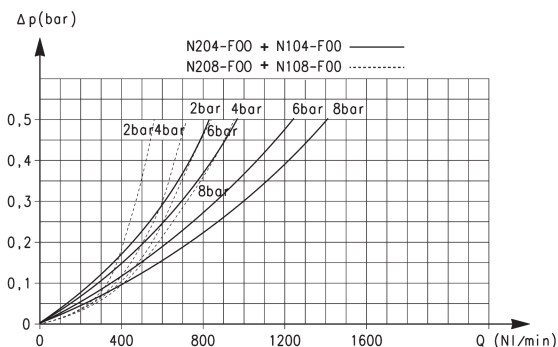
DIMENSIONS

Mod.	A	B	C	E	F	G	H	M	N	O	P	Q	T	U
N108-F00	111	78	33	14.5	101	10	M5	45	44.5	G1/8	38	40	22	G1/8
N104-F00	111	78	33	14.5	101	10	M5	45	44.5	G1/8	38	40	22	G1/4
N208-F00	135	102	33	14.5	125	10	M5	45	44.5	G1/8	38	40	22	G1/8
N204-F00	135	102	33	14.5	125	10	M5	45	44.5	G1/8	38	40	22	G1/4

Products designed for industrial applications.
 General terms and conditions for sale are available on www.camozzi.com.

3/4.05.02

FLOW DIAGRAMS



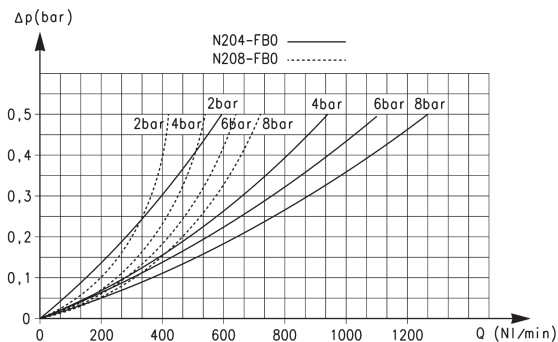
Flow diagram for models:
N204-F00 - N104-F00 = _____
N208-F00 - N108-F00 = - - - - -

ΔP = Pressure drop
Q = Flow

Flow diagram for models:
N204-F10 = _____
N208-F10 = - - - - -

ΔP = Pressure drop
Q = Flow

FLOW DIAGRAMS



Flow diagram for models:
N204-FB0 = _____
N208-FB0 = - - - - -

ΔP = Pressure drop
Q = Flow

Series N pressure regulators

Ports G1/8, G1/4



Series N pressure regulators are available with G1/4 and G1/8 ports. Their design incorporates a self relieving diaphragm so as to allow decremental adjustments.

3

TREATMENT

GENERAL DATA

Construction	diaphragm type
Materials	brass, technopolymer, NBR
Ports	G1/8 - G1/4
Weight	Kg 0.316
Pressure gauge ports	G1/8
Mounting	in - line or console (in any position)
Operating temperature	-5°C ÷ 50°C (with the dew point of the fluid lower than 2°C at the min. working temperature)
Inlet pressure	0 ÷ 16 bar
Outlet pressure	0.5 ÷ 10 bar
Nominal flow	see graphs
Secondary pressure relieving	standard

CODING EXAMPLE

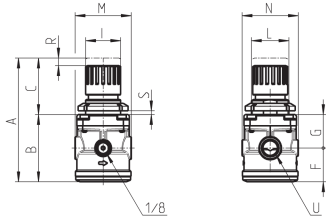
N	12	04	-	R	T	0	-	■	-	●
N SERIES										
12 SIZE: 12										
04 PORTS: 08 = G1/8 04 = G1/4										
R R = REGULATOR										
T OPERATING PRESSURE: 0 = 0.5 + 10 bar (standard) 1 = 0 ÷ 4 bar 2 = 0 ÷ 2 bar 7 = 0.5 + 7 bar T = calibrated * B = locked *										
0 DESIGN TYPE: 0 = self-relieving 1 = non-relieving										
* NOTE: IF THE REGULATOR IS CALIBRATED OR LOCKED, AFTER THE DESIGN TYPE ADD THE INLET PRESSURE "■" AND THE OUTLET PRESSURE "●"										
INLET PRESSURE: ■ = enter the SUPPLY pressure value										
OUTLET PRESSURE: ● = enter the OUTLET pressure value for the LOCKED regulator or the maximum value of the ADJUSTABLE pressure for the CALIBRATED regulator										
Example of a calibrated regulator with Inlet Pressure = 6.3 bar and Outlet Pressure = 4.5 bar Complete part number: N1204-RT0-6.3-4.5										

Pressure regulators Series N

Calibrated or blocked regulators on request

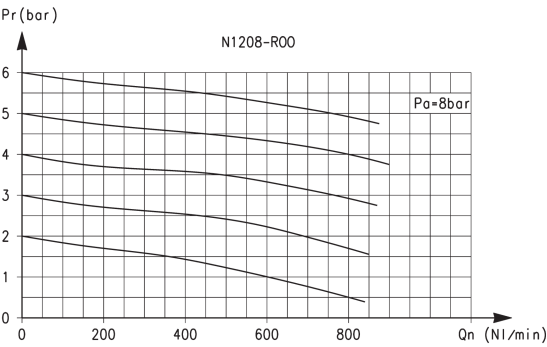


PR01 = regulator without relieving
PR02 = regulator with relieving



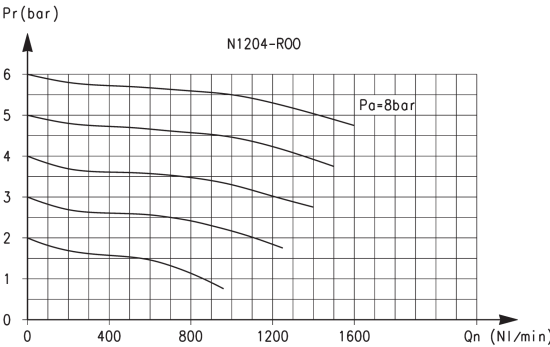
DIMENSIONS												
Mod.	A	B	C	F	G	I	L	M	N	R	S	U
N1208-R00	92	53	39	26	27	28	30X1,5	45	45	3	0+6	G1/8
N1204-R00	92	53	39	26	27	28	30X1,5	45	45	3	0+6	G1/4

FLOW DIAGRAMS



Flow diagram for model: N208-R00

Pa = Inlet pressure
Pr = Regulated pressure
Qn = Flow



Flow diagram for model: N204-R00

Pa = Inlet pressure
Pr = Regulated pressure
Qn = Flow

Series N lubricators

New version

Ports G1/8, G1/4



» Available with:
transparent PA12 bowl or
nickel-plated brass bowl
for the small version (N1)

Series N lubricators are available with G1/4 and G1/8 ports.

The special type of design allows a vast range of applications in relation to the amount of atomized oil and the air consumed.

The body is made of brass, whilst the bowl can be in transparent PA12 or in nickel-plated brass.

The version with metal bowl is particularly suitable for applications subject to impacts or in the presence of aggressive agents that could damage the PA12 bowl.

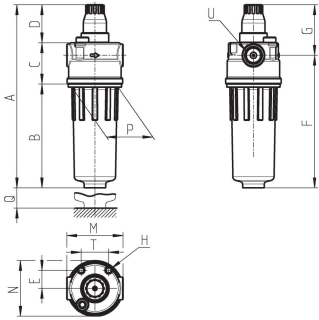
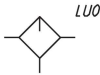
GENERAL DATA

Construction	compensation valve
Materials	brass, transparent PA12 or nickel-plated brass, NBR
Ports	G1/8 - G1/4
Oil capacity	26 cm ³ (bowl size = 1) 37 cm ³ (bowl size = 2)
Weight	0.240 kg
Mounting	vertical, inline
Operating temperature	-5°C ÷ 50°C at 10 bar (with the dew point of the fluid lower than 2°C at the min. working temperature)
Oil refilling	without pressure
Oil for lubricator	use ISO VG32 oils. Once applied, the lubrication should never be interrupted
Operating pressure	1 ÷ 16 bar
Nominal flow	see diagrams
Min. air consumption for lubrication	at 1 bar = 7.5 NI/min at 6 bar = 11 NI/min

CODING EXAMPLE

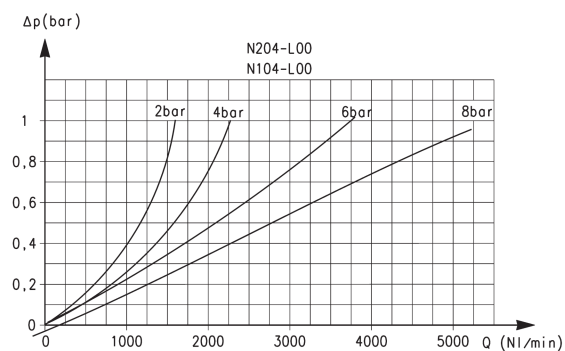
N	2	04	-	L	00	-	
N	SERIES						
2	SIZE: 1 = small bowl (26 cm³) 2 = normal bowl (37 cm³)						
04	PORTS: 08 = G1/8 04= G1/4						
L	L = LUBRICATOR						
00	DESIGN TYPE: 00 = atomized oil						
	BOWL MATERIAL: = transparent PA12 (standard) TM = nickel-plated brass (only in the small size)						

Lubricators Series N



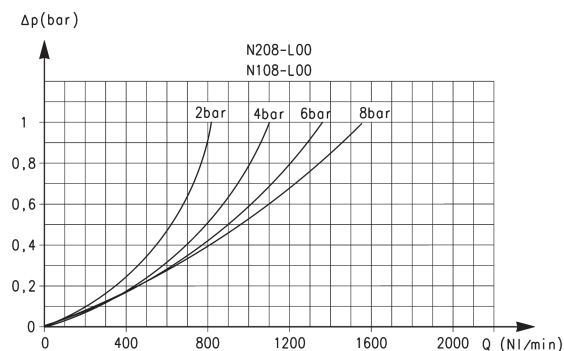
DIMENSIONS														
Mod.	A	B	C	D	E	F	G	H	M	N	P	Q	T	U
N108-L00	122.5	59	33	30.5	14.5	82	40.5	M5	45	44.5	38	46.5	22	G1/8
N104-L00	122.5	59	33	30.5	14.5	82	40.5	M5	45	44.5	38	46.5	22	G1/4
N208-L00	146.5	83	33	30.5	14.5	106	40.5	M5	45	44.5	38	46.5	22	G1/8
N204-L00	146.5	83	33	30.5	14.5	106	40.5	M5	45	44.5	38	46.5	22	G1/4

FLOW DIAGRAMS



Flow diagrams for models: N204-L00 and N104-L00

ΔP = Pressure drop
 Q = Flow



Flow diagrams for models: N208-L00 and N108-L00

ΔP = Pressure drop
 Q = Flow

Series N filter-regulators

New version 

Ports G1/8, G1/4



» Available with:
transparent PA12 bowl or
nickel-plated brass bowl
for the small version (N1)

The version with metal bowl is particularly
suitable for applications subject to impacts
or in the presence of aggressive agents that
could damage the PA12 bowl.

Series N filter-regulator is available with G1/4 and G1/8 ports.
Its design incorporates a self relieving diaphragm. The transparent filter bowl allows an
easy monitoring of the condensate level. The semi-automatic manual drain makes both
the manual and automatic condensate exhaust easier when there is no pressure.

GENERAL DATA

Construction	HDPE and coalescing filtering element
Materials	brass body and poppet stainless steel spring NBR O-ring HDPE filtering element transparent PA12 or nickel-plated bowl others: PA
Ports	G1/8 - G1/4
Max. condensate capacity	11 cm ³ (bowl size = 1) 28 cm ³ (bowl size = 2)
Weight	0.370 Kg
Pressure gauge ports	G1/8
Mounting	vertical, in- line
Operating temperature	-5°C ÷ 50°C a 10 bar (with the dew point of the fluid lower than 2°C at the min. working temperature)
Quality of delivered air according to ISO 8573-1 2010	Class 7.8.4 with 25 µm filtering element Class 6.8.4 with 5 µm filtering element
Draining of condensate	semi-automatic manual
Inlet pressure	0 ÷ 16 bar
Outlet pressure	0.5 ÷ 10 bar
Nominal flow	see diagrams
Secondary pressure relieving	standard

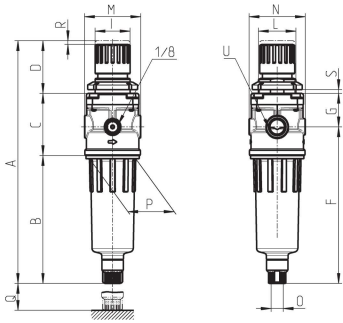
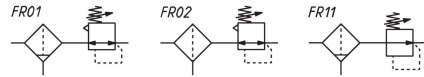
CODING EXAMPLE

N	2	04	-	D	0	0	-	4	-	
N	SERIES									
2	SIZE: 1 = small bowl (11 cm³) 2 = normal bowl (28 cm³)									
04	PORTS: 08 = G1/8 04= G1/4									
D	D = FILTER-REGULATOR									
0	FILTERING ELEMENT: 0 = 25µm (standard) 1 = 5µm									
0	DRAINING OF CONDENSATE AND DESIGN TYPE: 0 = semi-automatic manual drain with self-relieving 1 = semi-automatic manual drain without relieving 4 = depressurisation with self-relieving (with normal bowl only) 5 = protected depressurisation with self-relieving (with normal bowl only) 8 = no drain (direct port 1/8), with self-relieving									
4	OPERATING PRESSURE: = 0.5 ÷ 10 bar (standard) 2 = 0 ÷ 2 bar 4 = 0 ÷ 4 bar 7 = 0.5 ÷ 7 bar									
	BOWL MATERIAL: = transparent PA12 (standard) TM = nickel-plated brass (only in the small size with semi-automatic manual drain or without drain)									

Series N filter-regulators

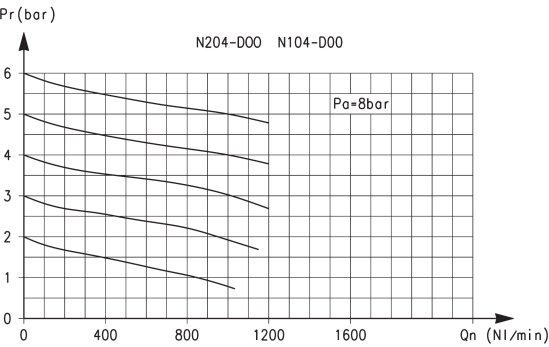


FR01 = filter-regulator with relieving and manual drain
FR02 = FR with relieving and without drain
FR11 = FR with manual drain and without relieving



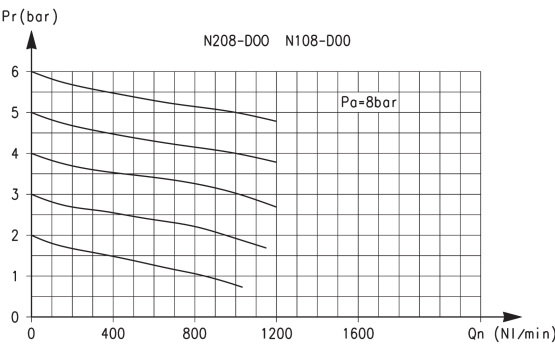
Mod.	A	B	C	D	F	G	I	L	M	N	O	P	Q	R	S	U
N108-D00	167	78	50	39	101	27	28	M30x1,5	45	45	G1/8	38	40	3	0 + 6	G1/8
N104-D00	167	78	50	39	101	27	28	M30x1,5	45	45	G1/8	38	40	3	0 + 6	G1/4
N208-D00	191	102	50	39	125	27	28	M30x1,5	45	45	G1/8	38	40	3	0 + 6	G1/8
N204-D00	191	102	50	39	125	27	28	M30x1,5	45	45	G1/8	38	40	3	0 + 6	G1/4

FLOW DIAGRAMS



Flow diagrams for models: N204-D00 - N104-D00

Pa = Inlet pressure
Pr = Regulated pressure
Qn = Flow



Flow diagrams for models: N208-D00 - N108-D00

Pa = Inlet pressure
Pr = Regulated pressure
Qn = Flow

ACCESSORIES FOR SERIES N



Mounting bracket
Mod. C114-ST



Mounting bracket
Mod. C114-ST/1



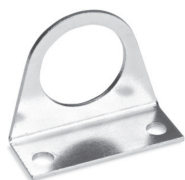
Mounting bracket
Mod. C114-ST/2



Mounting bracket
Mod. N204-ST



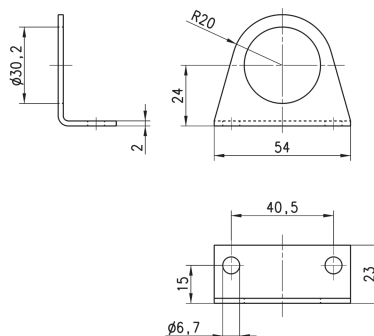
Systems of rapid connections designed to make mounting easier.



Mounting bracket Mod. C114-ST

For regulators and filter-regulators (G1/4 - G1/8)

The kit is supplied with:
1x zinc-plated steel bracket.



Mod.

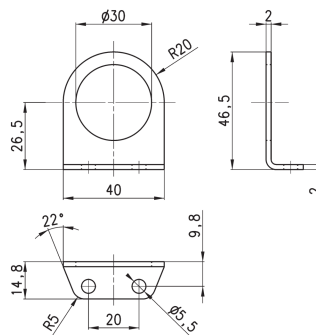
C114-ST



Mounting bracket Mod. C114-ST/1

For regulators and filter-regulators (G1/4 - G1/8)

The kit is supplied with 1 zinc-plated steel bracket.



Mod.

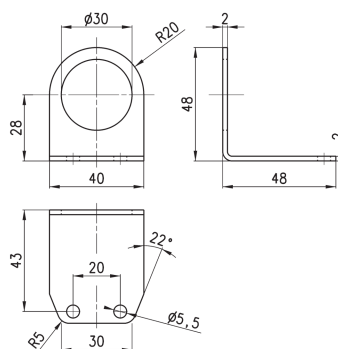
C114-ST/1



Mounting bracket Mod. C114-ST/2

For regulators and filter-regulators
(G1/4 - G1/8)

The kit is supplied with 1 zinc-plated steel bracket.



Mod.

C114-ST/2



Mounting bracket Mod. N204-ST

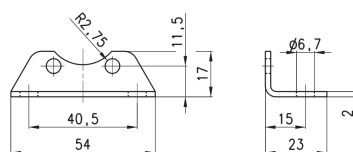
For filters and lubricators

The kit is supplied with:

1 bracket

2 screws M5X6

Materials: zinc-plated steel bracket and screws.



Mod.

N204-ST