

Micro pressure regulators Series CLR

Micro pressure regulators with banjo in technopolymer
Ports G1/4, G1/8



Series CLR micro pressure regulators are available with G1/8 and G1/4 connections. A piston with relieving and VS function (valve with fast draining) has been incorporated into its design. The body is in brass, while the connection fitting is in technopolymer which guarantees maximum lightness. With a threaded top part of the body both direct mounting to a valve outlet (1/8 and 1/4 threads) and panel mounting are easily facilitated.

The pressure is precisely regulated simply by turning the polymer knob with a locking nut available to set the desired output.

GENERAL DATA

Construction	piston
Materials	brass body, technopolymer banjo, stainless steel spring; NBR O-ring
Ports	G1/8 - G1/4
Weight	Kg 0,035
Mounting	in-line or panel mounting (in any position)
Operating temperature	-5°C + 50°C (with the dew point of the fluid lower than 2°C at the min. working temperature)
Inlet pressure	2 + 10 bar
Outlet pressure	0,5 + 10 bar
Nominal flow	see graphs
Secondary pressure relieving	standard (all regulators are provided with high relief flow VS function)

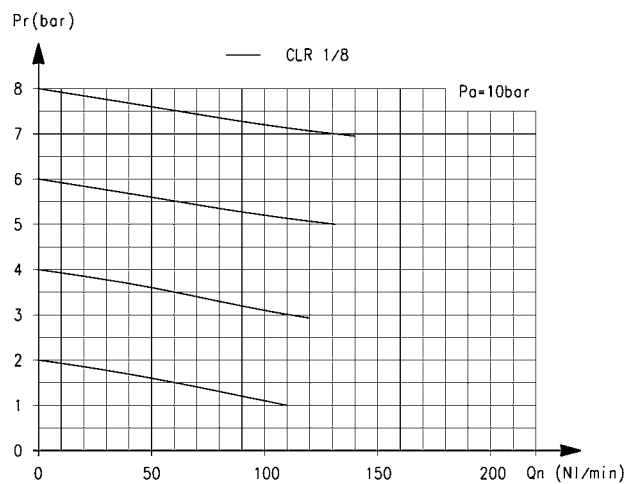
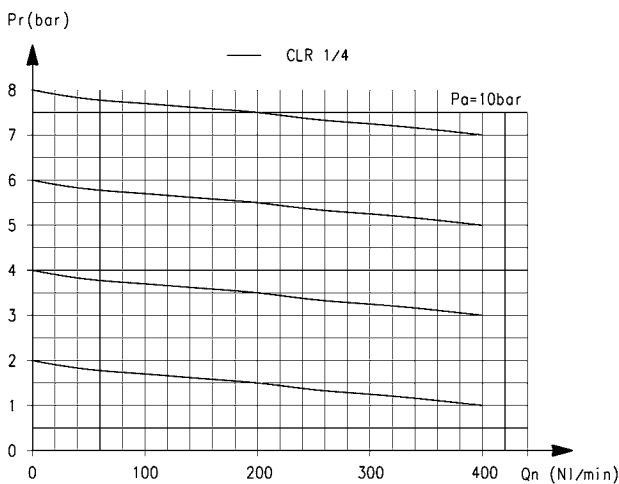
CODING EXAMPLE

CL	R	1/8	-	4
----	---	-----	---	---

CL	SERIES
R	R = REGULATOR
1/8	PORTS: 1/8 = G1/8 1/4 = G1/4
4	TUBE: 4 = Ø4 mm (G1/8 only) 6 = Ø6 mm 8 = Ø8 mm

FLOW DIAGRAMS

New

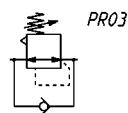
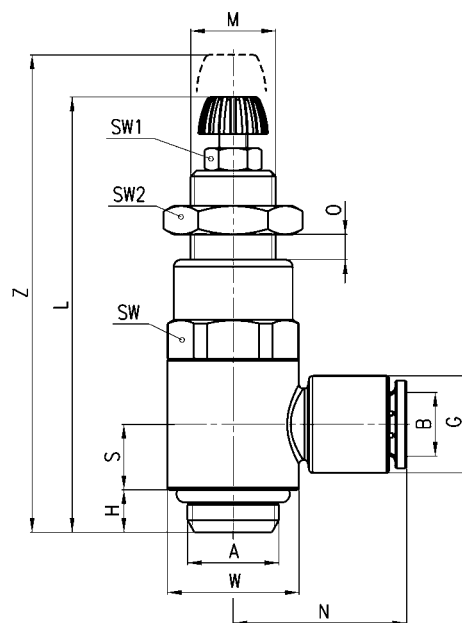


Pa = Inlet pressure (10 Bar) -
Pr = Regulated pressure - Q = Flow
CLR 1/4-6 6 bar ΔP1 = 209 NI/min
CLR 1/4-8 6 bar ΔP1 = 310 NI/min

Pa = Inlet pressure (10 Bar) -
Pr = Regulated pressure - Q = Flow
CLR 1/8-4 6bar ΔP1 = 90 NI/min - CLR 1/8-6 6bar ΔP1 = 120 NI/min - CLR 1/8-8 6bar ΔP1 = 120 NI/min

Micro pressure regulators Series CLR

New



Mod.	A	B	G	H	L	M	N	O	S	W	SW	SW1	SW2	Z
CLR 1/8-4	G1/8	4	11,6	5	52	M11x1	21	0+6,5	7,75	14	14	7	14	59
CLR 1/8-6	G1/8	6	11,6	5	52	M11x1	21	0+6,5	7,75	14	14	7	14	59
CLR 1/8-8	G1/8	8	13,9	5	52	M11x1	22,5	0+6,5	7,75	14	14	7	14	59
CLR 1/4-6	G1/4	6	13,9	6	59,5	M12x1	24,5	0+8	9,25	18,6	17	7	17	68
CLR 1/4-8	G1/4	8	13,9	6	59,5	M12x1	24,5	0+8	9,25	18,6	17	7	17	68

Pressure microregulators Series M

Ports G1/8, G1/4

» Calibrated or blocked regulator available on request



The Series «M» pressure regulator is available with G1/8 and G1/4 ports. Its design incorporates a diaphragm and relieving so as to allow decremental adjustments as well.

Microregulators are available with different regulation types: non-relieving, very sensitive self-relieving (through a light air leak) and VS (valve with fast draining).

The VS version is used when a regulator should be inserted between the valve and cylinder, or capacity, without any negative influence on the exhaust.

GENERAL DATA

Construction	diaphragm type
Materials	brass body, stainless steel spring, NBR O-ring
Ports	G1/8 - G1/4
Weight	Kg 0.235
Pressure gauge ports	G1/8
Mounting	in-line or panel mounting (in any position)
Operating temperature	-5°C + 50°C (with the dew point of the fluid lower than 2°C at the min. working temperature)
Inlet pressure	0 + 16 bar
Outlet pressure	0.5 + 10 bar
Nominal flow	see graphs
Secondary pressure relieving	standard

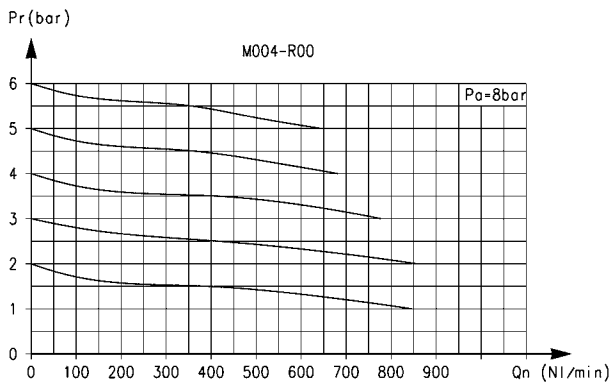
CODING EXAMPLE

M	0	04	-	R	0	0	
----------	----------	-----------	----------	----------	----------	----------	--

M	SERIES
0	SIZE: 0
04	PORTS: 08 = G1/8 04 = G1/4
R	R = REGULATOR
0	OPERATING PRESSURE: 0 = 0,5 ÷ 10 (standard) 1 = 0 ÷ 4 2 = 0 ÷ 2 7 = 0,5 ÷ 7
0	DESIGN TYPE: 0 = self relieving 1 = non relieving 5 = precise setting
	REGULATION TYPE: = without high relief flow VS = high relief flow

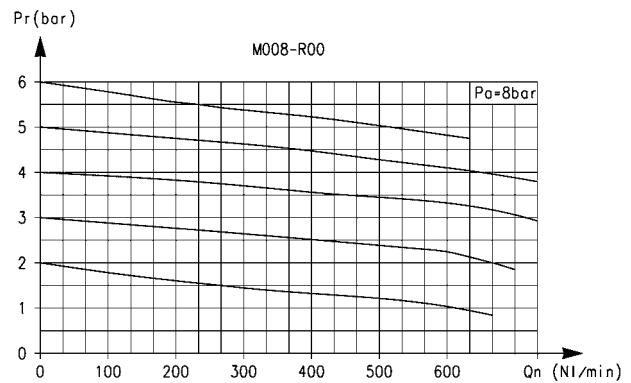
3

TREATMENT

FLOW DIAGRAMS


Flow diagram for models: M004-R00

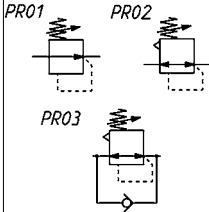
P_a = Inlet pressure
 P_r = Regulated pressure
 Q_n = Flow



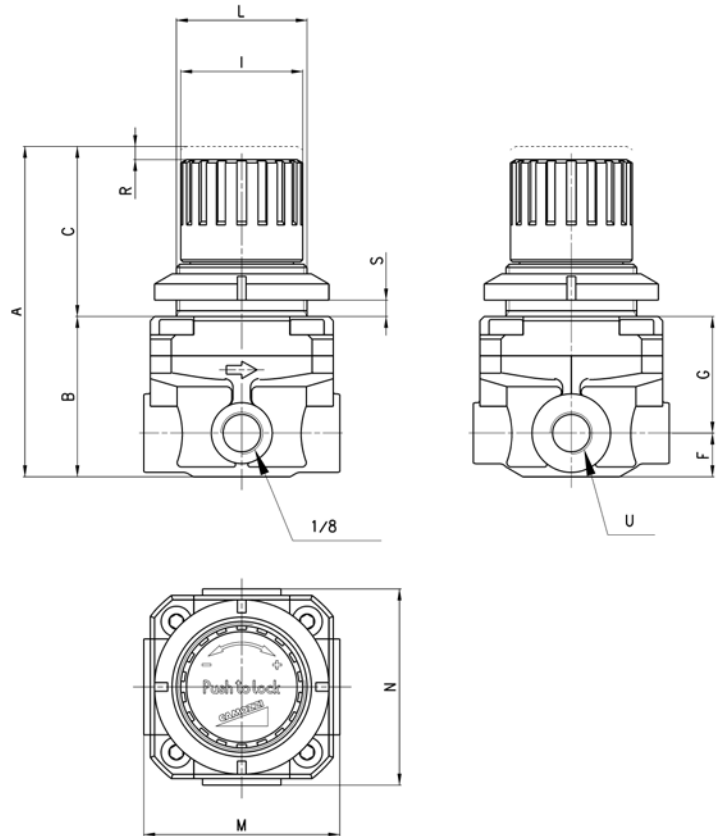
Flow diagram for models: M008-R00

P_a = Inlet pressure
 P_r = Regulated pressure
 Q_n = Flow

Microregulator Series M



PR01 = regulator without relieving
 PR02 = regulator with relieving
 PR03 = regulator with relieving and by-pass valve



DIMENSIONS

Mod.	A	B	C	F	G	I	L	M	N	R	S	U
M008-R00	76	37	39	10	27	28	30 X 1,5	45	45	3	0+6	G1/8 *
M004-R00	76	37	39	10	27	28	30 X 1,5	45	45	3	0+6	G1/4 *

* = calibrated or blocked regulator available on request

Pressure microregulators Series T

Ports G1/8 and G1/4



Series T pressure regulators are available with G1/8 and G1/4 brass connections.

A self-relieving piston has been incorporated into the design to allow decreasing adjustments.

Non-relieving versions are also available.

All models are equipped with a valve enabling fast draining (VS) which is useful when a regulator should be inserted between the valve and cylinder (or capacity) without any negative influence on the exhaust.

GENERAL DATA

Construction	piston
Materials	technopolymer body and piston, stainless steel spring, brass inserts, NBR O-ring and poppet
Ports	G1/8 - G1/4
Weight	g 95
Pressure gauge ports	G1/8
Mounting	in-line or panel mounting (in any position)
Operating temperature	-5°C ÷ 50°C (with the dew point of the fluid lower than 2°C at the min. working temperature)
Inlet pressure	0 ÷ 12 bar
Outlet pressure	0, 5 ÷ 10 bar
Nominal flow	see graphs
Secondary pressure relieving	standard

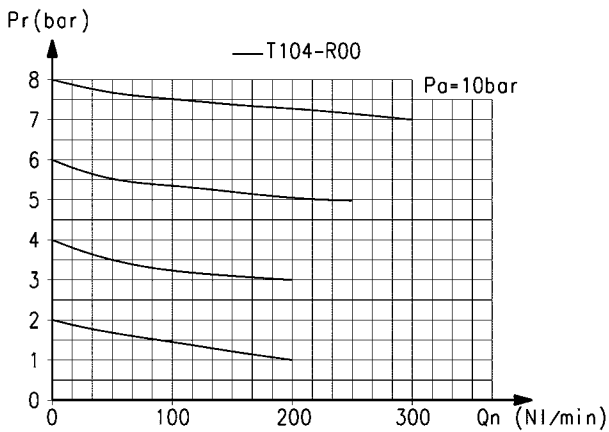
CODING EXAMPLE

T	1	08	-	R	0	0
---	---	----	---	---	---	---

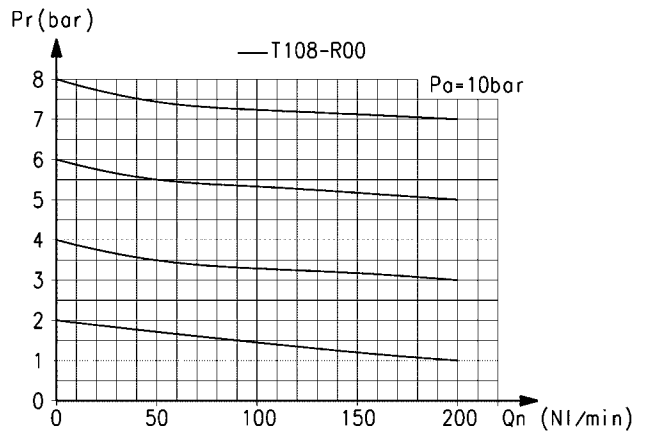
T	SERIES
1	SIZE
08	PORTS: 08 = G1/8 04 = G1/4
R	REGULATOR
0	OPERATING PRESSURE: 0 = 0,5 ÷ 10 1 = 0 ÷ 4 2 = 0 ÷ 2 7 = 0 ÷ 7 (standard)
0	DESIGN TYPE: 0 = self-relieving 1 = non relieving

FLOW DIAGRAMS

New



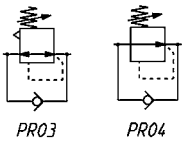
Flow diagram for model: T104-R00
 Pa = Inlet pressure
 Pr = Regulated pressure
 Qn = Flow



Flow diagram for model: T108-R00
 Pa = Inlet pressure
 Pr = Regulated pressure
 Qn = Flow

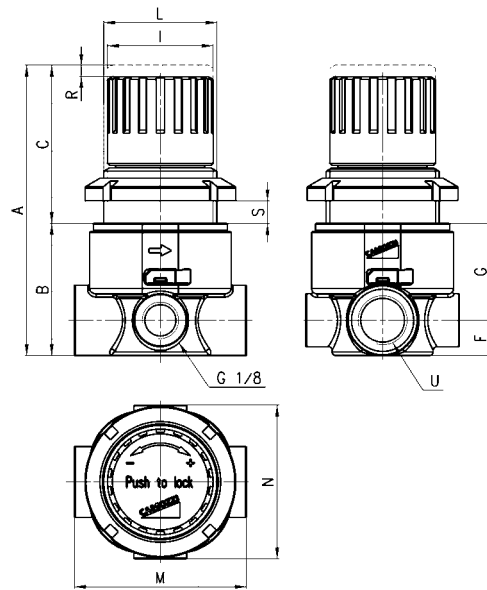
Pressure microregulator Series T

New



PR03 = regulator with relieving and by-pass valve

PR04 = regulator without relieving and with by-pass valve



DIMENSIONS

Mod.	A	B	C	F	G	I	L	M	N	R	S	U
T108-R00	77	35	42	9,5	25,5	28	M30X1,5	46	41	3	7	G1/8
T104-R00	77	35	42	9,5	25,5	28	M30X1,5	46	41	3	7	G1/4