

# Series CGC

## 3-Finger centric grippers

Magnetic

Sizes: 50, 64, 80, 100, 125 mm



- » Compact design
- » High gripping force
- » Long stroke

The proximity switches can be inserted in the U-shaped grooves on the body in order to detect whether the gripper is in an open or closed position.

Series CGC 3-finger centric grippers are available in 5 different sizes. Significant for Series CGC is the compact design that allows the combination of a high gripping force and long stroke. The piston is equipped with a permanent magnet for the use of magnetic proximity switches.

### GENERAL DATA

<b>Model</b>	CGC-50; CGC-64; CGC-80; CGC-100; CGC-125
<b>Bore sizes</b>	Ø 32 Ø 45 Ø 58 Ø 77 Ø 98
<b>Type of operation</b>	double-acting
<b>Materials</b>	housing: high tensile special hard-coated aluminium alloy, Functional parts: hardened steel
<b>Operating pressure (bar)</b>	2 + 7 bar
<b>Operating temperature</b>	5°C + 60°C
<b>Repeatability</b>	+/- 0,05 mm
<b>Max. operating frequency</b>	60 cycles/min
<b>Lubrication</b>	lever section      lubrication required on sliding section
<b>Theoretical holding force (N) with gripping point at 30 mm with 5 bar opening</b>	Ø 32 = 78, Ø 45 = 185 Ø 58 = 340, Ø 77 = 580 Ø 98 = 940
<b>Theoretical holding force (N) with gripping point at 30 mm with 5 bar closing</b>	Ø 32 = 68, Ø 45 = 160 Ø 58 = 290, Ø 77 = 510 Ø 98 = 860
<b>Weight (g)</b>	Ø 32 = 230, Ø 45 = 410 Ø 58 = 800, Ø 77 = 1400 Ø 98 = 2400
<b>Stroke per finger (mm)</b>	Ø 32 = 4, Ø 45 = 6 Ø 58 = 8, Ø 77 = 10 Ø 98 = 13
<b>Port sizes</b>	Ø 32- 45 -58 - M5 Ø 77 - Ø 98 -G1/8
<b>Fluid</b>	filtered air without lubrication. If lubricated air is used, it is recommended to use oil ISO VG32. Once applied, the lubrication should never be interrupted.

**CODING EXAMPLE**

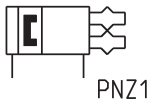
**CGC** - **050**

<b>CGC</b>	SERIES	PNEUMATIC SYMBOL
<b>050</b>	SIZE 050 = 32 mm 064 = 45 mm 080 = 58 mm 100 = 77 mm 125 = 98 mm	PNZ1

**PNEUMATIC SYMBOLS**

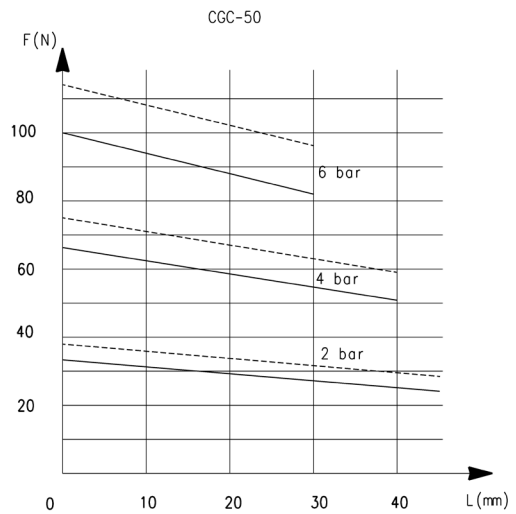
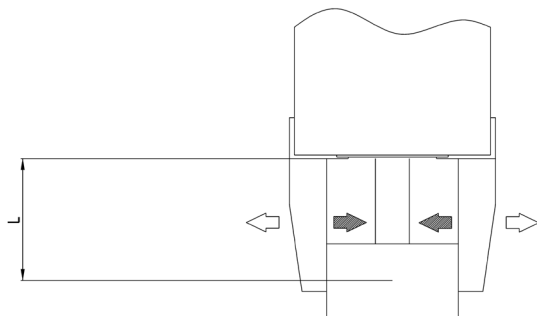
**PNEUMATIC SYMBOLS**

The pneumatic symbols which have been indicated in the CODING EXAMPLE are shown below.



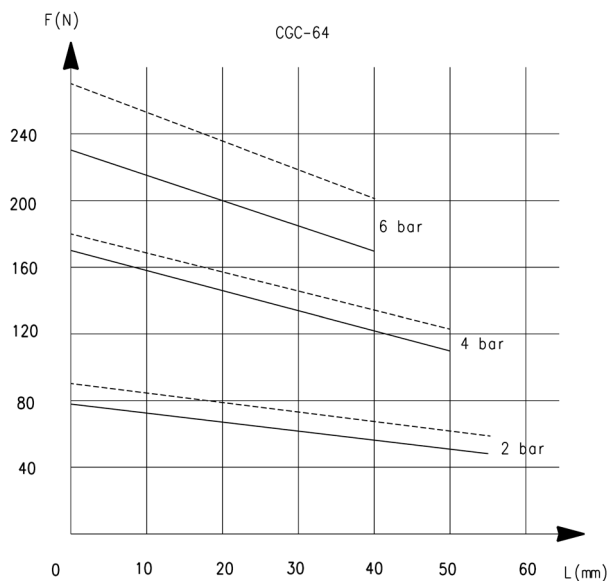
**GRIPPING FORCE CHARACTERISTICS**

**GRIPPING FORCE CHARACTERISTICS**

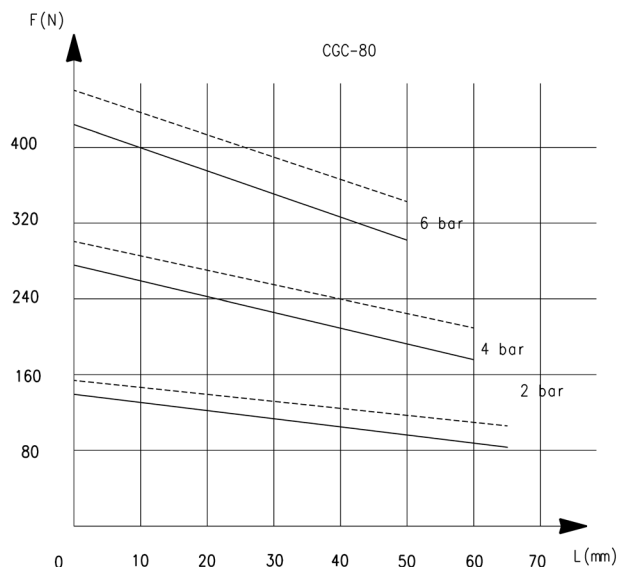


F = Gripping Force  
L = Gripping point length

## GRIPPING FORCE CHARACTERISTICS

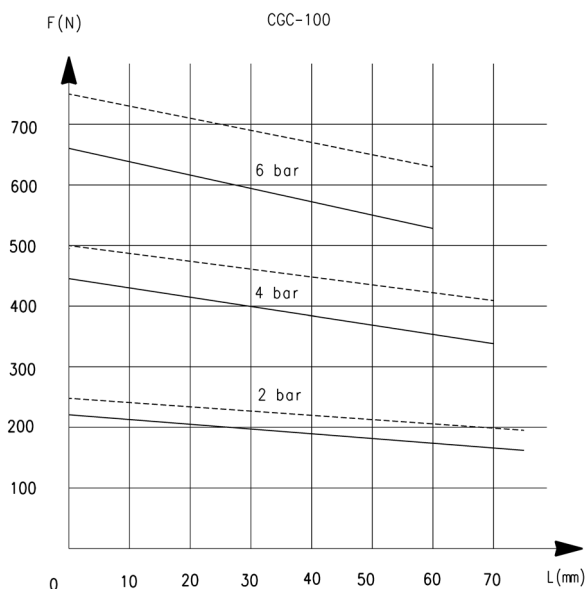


F = Gripping Force  
L = Gripping point length

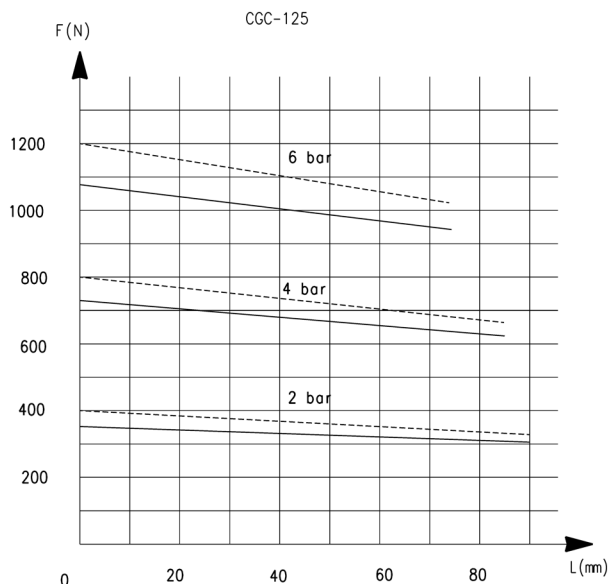


F = Gripping Force  
L = Gripping point length

## GRIPPING FORCE CHARACTERISTICS



F = Gripping Force  
L = Gripping point length

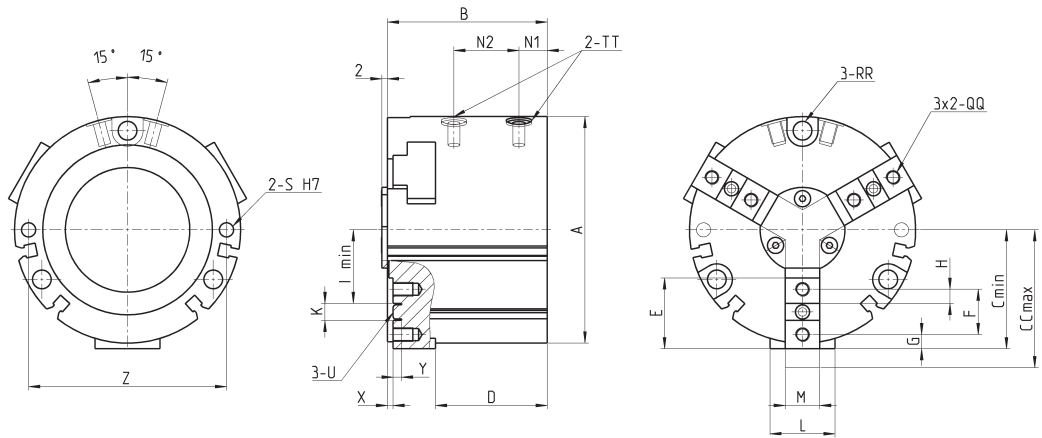


F = Gripping Force  
L = Gripping point length

Grippers Series CGC



TT = port connection  
 QQ = finger mounting holes  
 RR = Mounting holes  
 S = Mounting holes

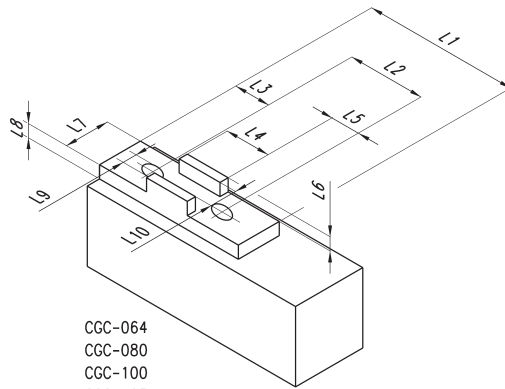


DIMENSIONS

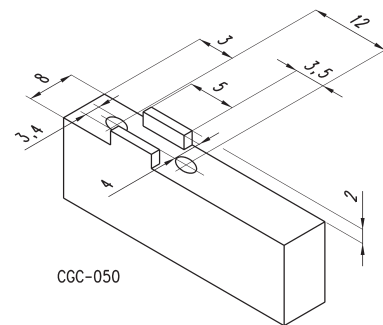
Mod.	A	B	C	CC	D	E	F	G	H	I	K	L	M	N1	N2	RR	QQ	S	TT	U	X	Y	Z	Weight (g)
<b>CGC-050</b>	50	39	26,5	30,5	27	18	12	3	3,5	15	5	14	8	9	13,5	Ø 3,4	M3x0,5	Ø 3	M5	Ø 4	1	2	44	230
<b>CGC-064</b>	64	47,5	32	38	32	20	13	4	4	19	5	18	10,2	10	16	Ø 5,5	M4x0,7	Ø 4	M5	Ø 4	2	2,5	56	410
<b>CGC-080</b>	80	56,5	42	50	39,5	25	16	5	5	26	6	23	12,2	10	23	Ø 6,6	M5x0,8	Ø 5	M5	Ø 5	2	3	70	800
<b>CGC-100</b>	100	65	52	62	45,5	32	20	6	6	32	8	27	14,2	12	25	Ø 6,6	M6x1	Ø 5	PT 1/8	Ø 6	3	3	90	1400
<b>CGC-125</b>	125	76	65,5	78,5	52	40	24	8,5	8	41	8	30	16,2	13,5	27,5	Ø 9	M6x1	Ø 6	PT 1/8	Ø 6	3	3,5	112	2400

Support dimensions for grippers Series CGC

Dimensions of external mounting support of finger - gripping element



CGC-064  
 CGC-080  
 CGC-100  
 CGC-125



CGC-050

Mod.	L1	L2	L3	L4	L5	L6	L7	L8	L9	L10
<b>CGC-064</b>	20	13	4	5	4	2,5	10,2	4,5	4,5	4
<b>CGC-080</b>	25	16	5	6	5	3	12,2	5,5	5,5	5
<b>CGC-100</b>	32	20	6	8	6	3	14,2	5,5	6,6	6
<b>CGC-120</b>	40	24	8,5	8	8	3,5	16,2	5,5	6,6	6